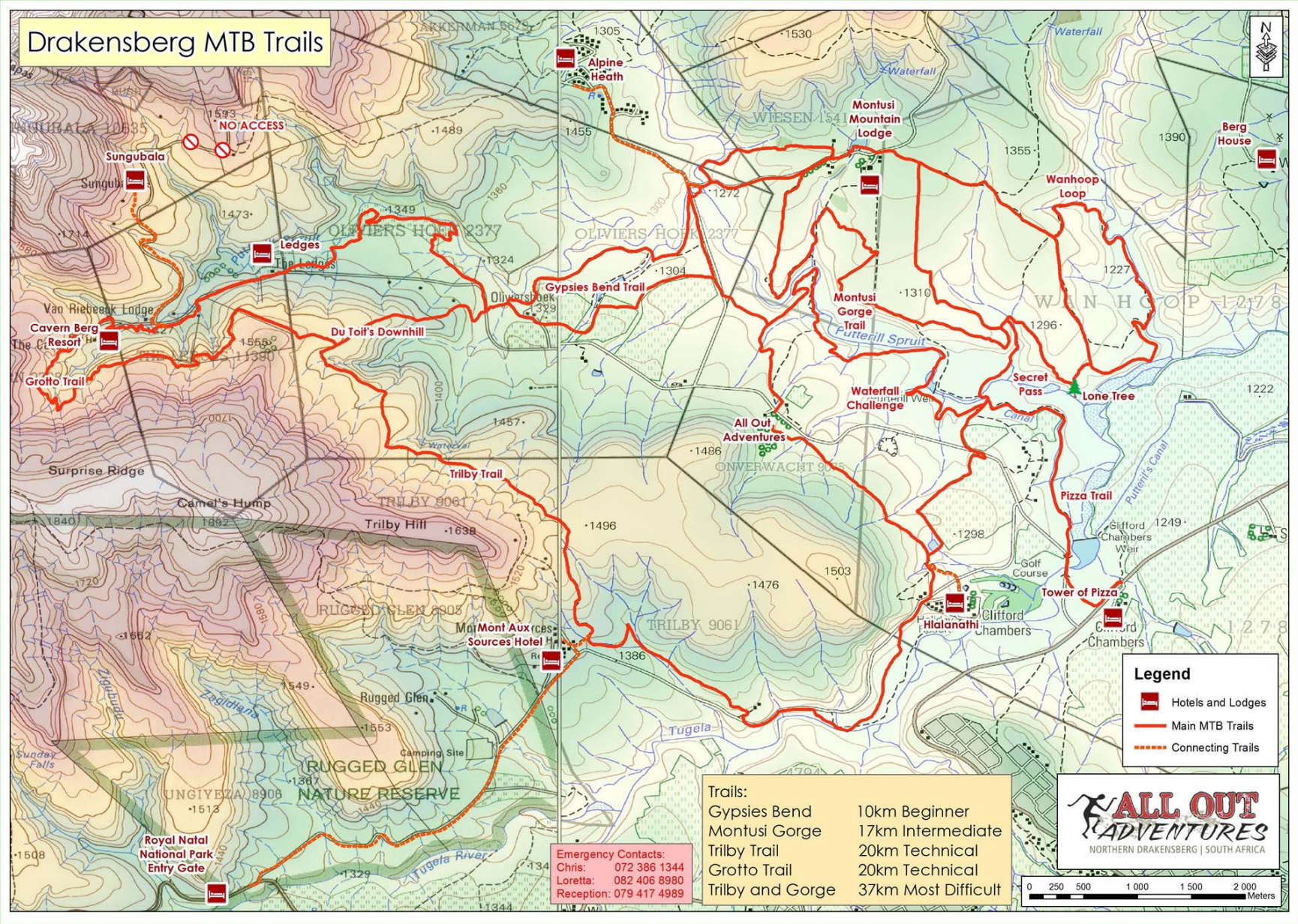


# Drakensberg MTB Trails



**Legend**

- Hotels and Lodges
- Main MTB Trails
- Connecting Trails

Trails:	
Gypsies Bend	10km Beginner
Montusi Gorge	17km Intermediate
Trilby Trail	20km Technical
Grotto Trail	20km Technical
Trilby and Gorge	37km Most Difficult

**Emergency Contacts:**  
 Chris: 072 386 1344  
 Loretta: 082 406 8980  
 Reception: 079 417 4989

